

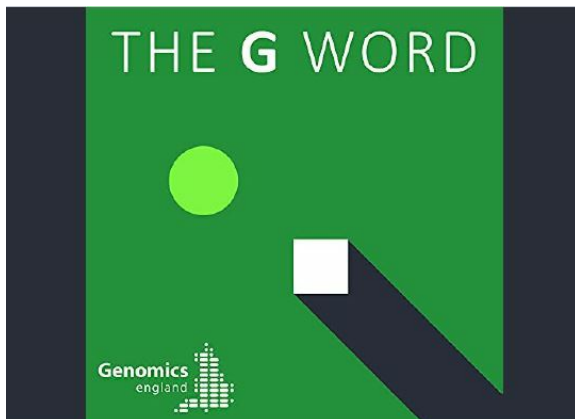


**G2P**  
GENOMES TO PEOPLE

**INSIDER  
SPOTLIGHT**



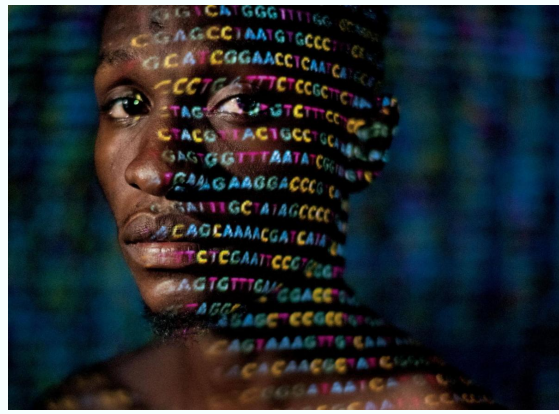
**MEDIA** [Science magazine](#) recently featured the Stetson family and their daughter Cora, one of the first healthy infants in the world to be sequenced at birth through the [BabySeq Project](#). Genomics England hopes to implement a similar pilot project, offering whole genome sequencing to newborns.



**MEDIA** Listen to “[The G Word](#)” podcast to hear Robert Green discuss newborn sequencing and the promise of precision health with Genomics England CEO, Chris Wigley.



**NEWS** We have launched the [G2P BIPOC internship program](#) that recognizes the importance of diversity, not only in our research but also on our team.



**NEWS** Researchers in the ELEVATE Consortium reported that [genetic testing can alter medical management](#) for patients with recurrent seizures, leading to better health outcomes and a decrease in healthcare costs.

---

**PUBLICATIONS** In their latest [Genomic Medicine](#) article, [MedSeq](#) researchers compared participants who received genome sequencing results to those who did not and concluded that genome sequencing did not cause distress.



Amy Lemke, PhD, MS  
joins Genomes2People  
with expertise in public  
health and genomics.

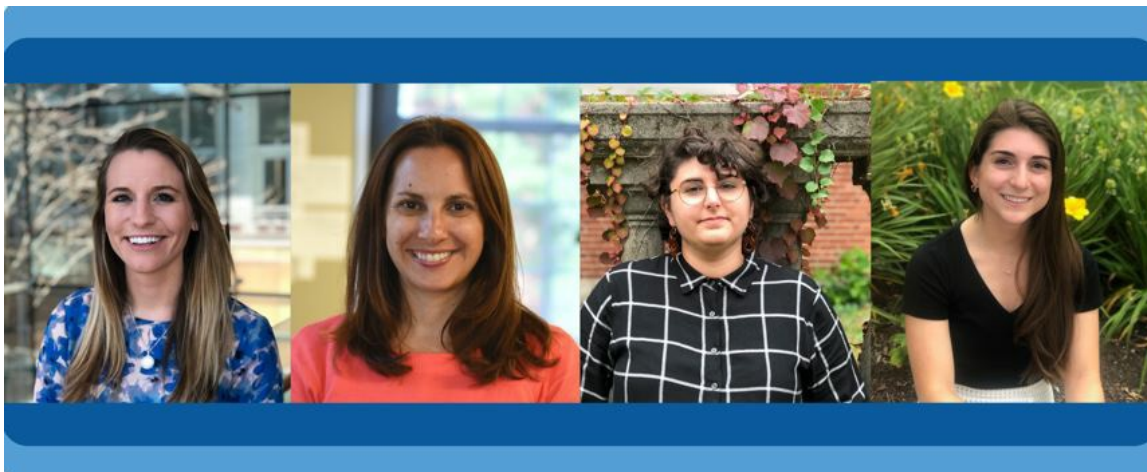
**PRESS** We are thrilled to welcome [Dr. Amy Lemke](#) to G2P! As Executive Director of the International Newborn Screening Consortium, Dr. Lemke is taking the BabySeq Project global. She will also join the [Precision Population Health](#) (PPH) Initiative, a collaboration between G2P and Ariadne Labs.

---



**BLOG** For the first time in history, we can treat the underlying cause of some genetic diseases - if we catch them early enough. [What does this mean for public health?](#) Continuation of the [BabySeq Project](#) strives to address this question by offering whole genome sequencing to enrolled families.

---



**PRESENTATIONS** The G2P genetic counseling team presented our research at the National Society of Genetic Counseling Annual Education Conference. View [their posters](#) on the conference homepage until Nov. 30th. See our past and future presentations [here](#).

---

**ZARATRIBUTE**



[The Franca Fund](#) is partnering with Zara to launch the first season of [ZaraTribute](#). This limited edition clothing line features photographs by the late Peter Lindbergh. All proceeds go to The Franca Fund to support our efforts in preventive genomics and newborn sequencing.

Click [here](#) to browse selections.

