

## Who can participate?

### **You may be eligible to participate if you:**

- Are 65 to 80 years old
- Speak and read English
- Have normal thinking and memory capabilities
- Have a first-degree relative with Alzheimer's disease (parent or sibling)
- Have a family member or close friend willing to answer questions and attend a study visit with you
- Are willing to give a cheek swab sample to check for genetic markers
- Are willing to be assigned to an amyloid disclosure study group by chance, like the flip of a coin
- Meet research study criteria by answering screening questions



## Contact Information

For more information about the study and to see if you qualify, please contact:

**Ally Hempel, BA**  
Project Manager

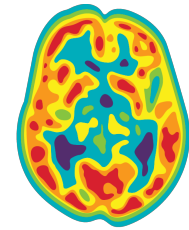
**Romy Fawaz, BS**  
Research Assistant

**Phone:** 617-264-5876

**Email:**  
revealscan@partners.org

**Visit our website for more information:**  
[www.genomes2people.org/research/revealscanproject/](http://www.genomes2people.org/research/revealscanproject/)

## RISK EVALUATION AND EDUCATION FOR ALZHEIMER'S DISEASE – THE STUDY OF COMMUNICATING AMYLOID NEUROIMAGING



## REVEAL-SCAN

An opportunity for individuals to learn more about their risk of developing Alzheimer's disease dementia

---

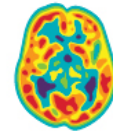
### **Principal Investigator:**

**Robert C. Green, MD, MPH**  
Brigham & Women's Hospital  
Boston, MA 02115

## About the Study

### As a participant in the REVEAL-SCAN study, you will be asked to:

- Undergo testing for memory and thinking, and answer questions about your medical history, habits, behaviors and attitudes
- Provide a cheek swab sample
- Have a PET (positron emission tomography) brain scan, which measures the level of amyloid in the brain and is similar to scans regularly used for other medical reasons
- Participate in up to 7 study visits, including an educational session, and 5 phone calls over 9 months



## REVEAL-SCAN

The purpose of REVEAL-SCAN is to understand how people respond to learning their risk of developing Alzheimer's disease and the result of their brain amyloid scan.

## Frequently Asked Questions

### What is amyloid?

- Amyloid is a protein that can build up in the brain many years before a person has memory problems.
- Amyloid may play a key role in the later development of Alzheimer's disease (AD).
- Levels of amyloid can be measured using a brain scan.

### What do "elevated" and "not elevated" amyloid levels mean?

- **Elevated** amyloid levels mean that amyloid plaques are present in the brain and are associated with an increased risk of AD, but do not mean a person will definitely develop AD.
- **Not Elevated** amyloid levels mean that elevated levels of amyloid plaques were not detected on the scan, but a person could still develop elevated levels or AD in the future.

### Are there any risks of participating?

All clinical studies, including REVEAL-SCAN, may involve risks associated with participation. We will discuss all potential risks with you during the informed consent process, and participants will be monitored closely throughout the study. You will be able to contact the study team at any time with questions or concerns.

### Will I be paid?

Upon completion of the study, participants will be paid for each visit that they completed. Compensation for participation can be up to \$200 per participant.

Funding provided by the National Institutes of Health/National Institute on Aging



BRIGHAM AND  
WOMEN'S HOSPITAL